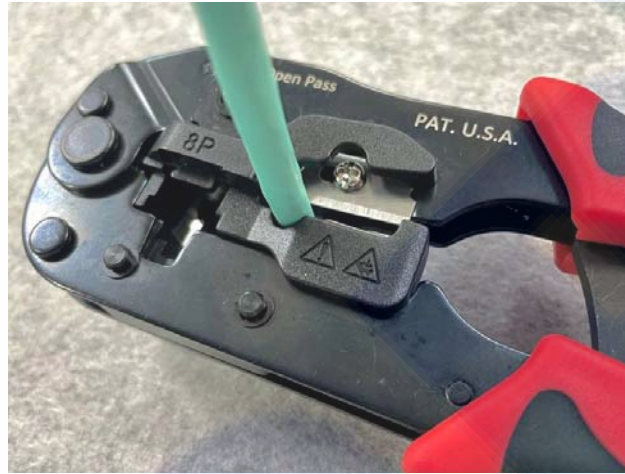


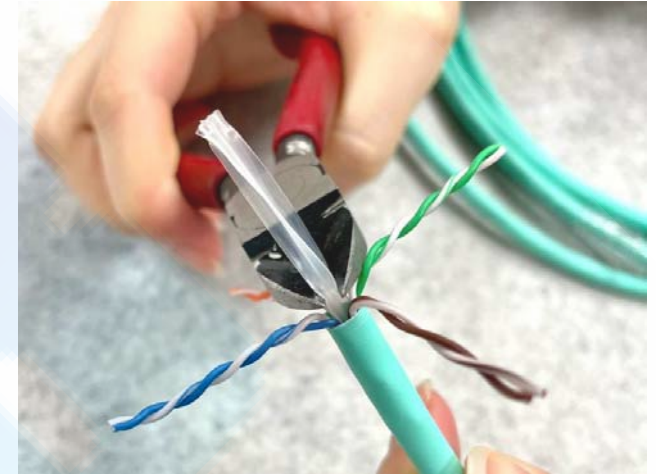
Easy Plug UTP & Boot(optional) Assembly SOP



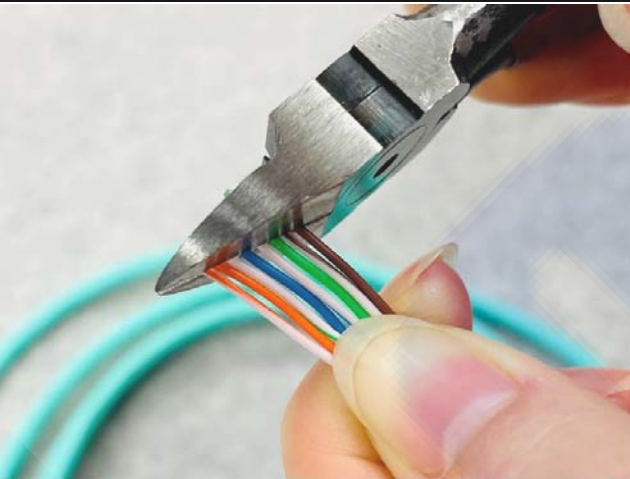
1. Insert the boot(optional).



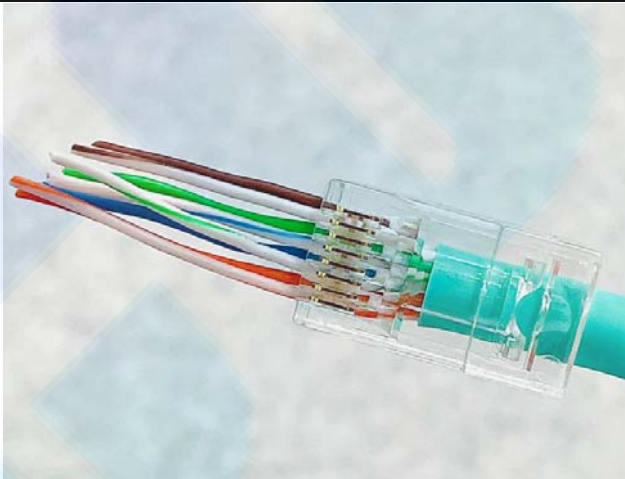
2. Strip off the cable jacket.



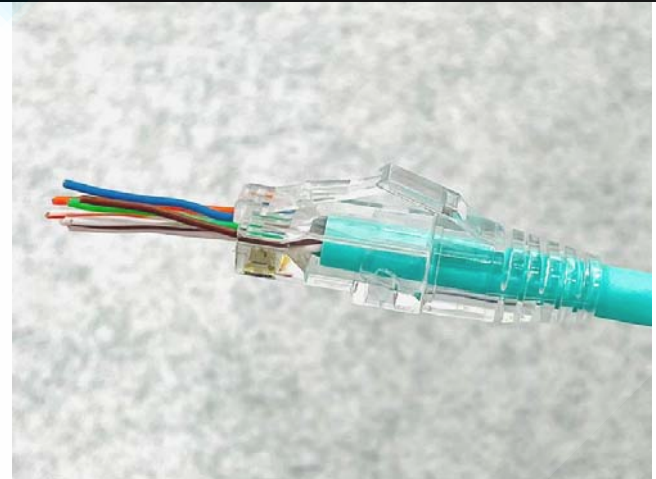
3. Place the conductor pairs into a “star” pattern at a near 90-degree angle to the cable jacket. Cut the cross divider.



4. Untwist each pair downward towards the cable jacket and remove kinks from the conductors. Arrange in the T568B sequence. Flush cut the conductors in the front to have a uniform appearance.



5. Insert the prepped wires into the connector and let the wire thru the plug. For strength of connection, also push as much of the cable jacket as possible into the connector.



6. Slide the boot on and seat it firmly. (optional)

Easy Plug UTP & Boot(optional) Assembly SOP



7. Terminated contact chips, cable holder and cut exposed conductor by the crimp tool.

8. Complete the assembly process.