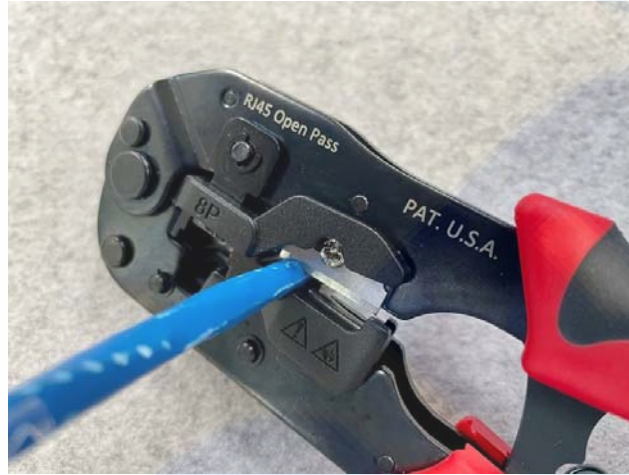


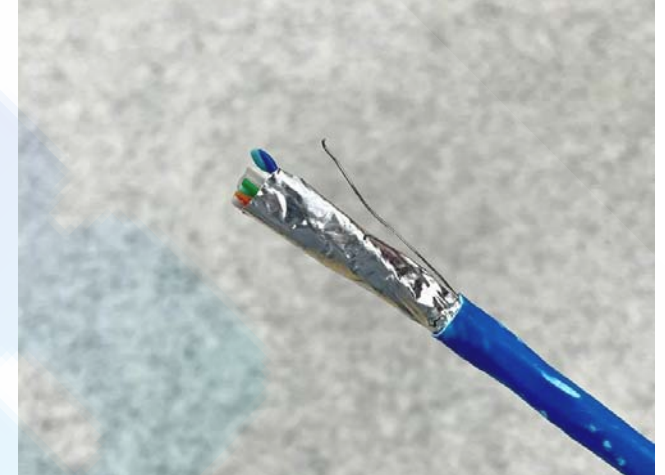
Easy Plug STP & Boot(optional) Assembly SOP



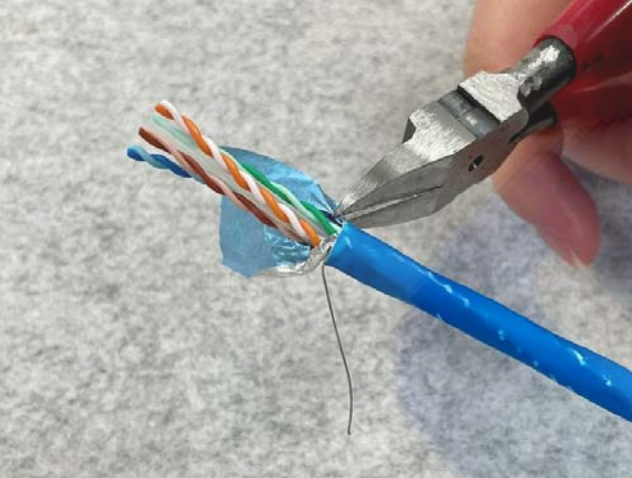
1. Insert the boot (optional).



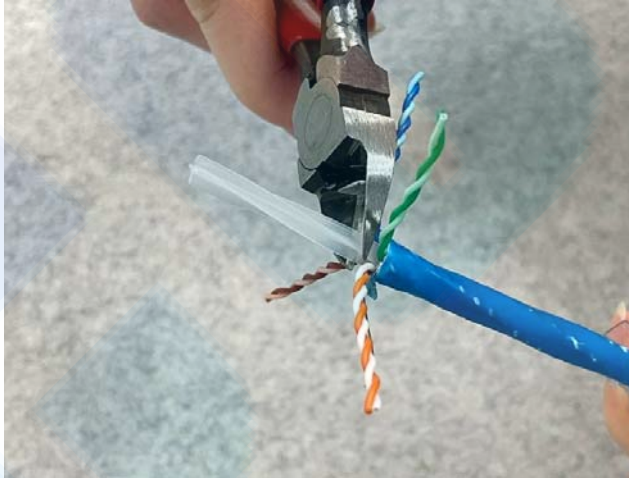
2. Strip off the cable jacket.



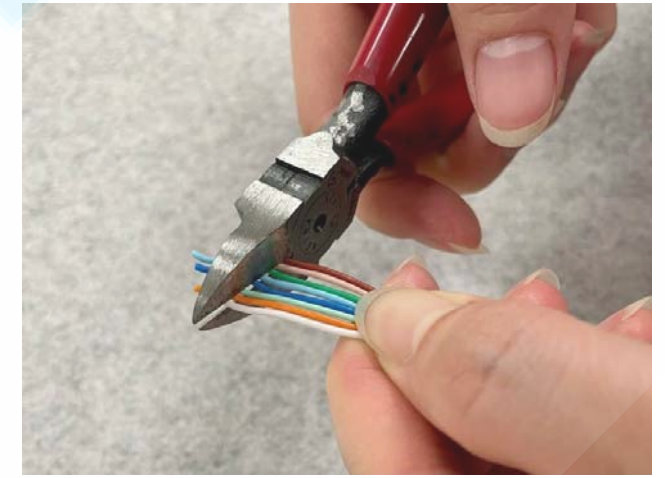
3. Expose the shield layer and drain wire.



4. Remove the shield layer.

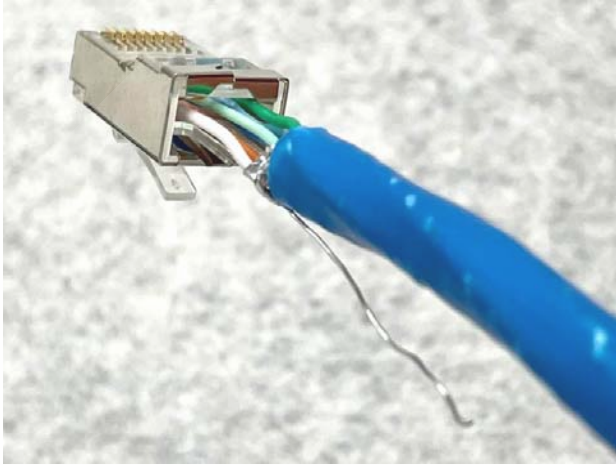


5. Place the conductor pairs into a "star" pattern at a near 90-degree angle to the cable jacket. Cut the cross divider.



6. Untwist each pair downward towards the cable jacket and arrange in the T568B sequence. Flush cut the conductors in the front to have a uniform appearance.

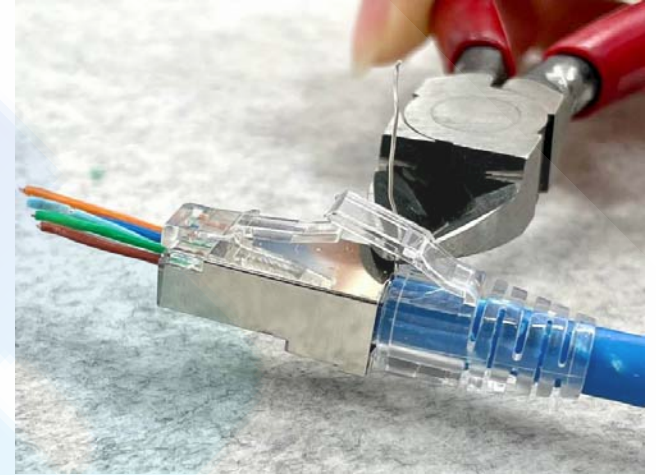
Easy Plug STP & Boot(optional) Assembly SOP



7. Set the drain wire at appropriate position to contact with external ground shield.



8. Insert the prepped wires into the connector let the wire thru the plug. For strength of connection, also push as much of the cable jacket as possible into the connector.



9. Cut the exposed drain wire. Slide the boot (optional) on and seat it firmly.



10. Terminated contact chips, cable holder and cut off exposed conductor by the crimp tool.



11. Complete the assembly process.